

PROJECT CATALOGUE

CONSUMER ELECTRONICS



1

IN-VITRO DIAGNOSTICS DEVICE



**NO LINK,
DUE TO NON-DISCLOSURE
POLICY***



2

MAL-NUTRIENT SCREENING DEVICE



**NO LINK,
DUE TO NON-DISCLOSURE
POLICY***



3

AUTOCPAP DEVICE FOR SLEEP APNEA



**NO LINK,
DUE TO NON-DISCLOSURE
POLICY***



4

PACKAGING FOR MEDICAL DEVICE



**NO LINK,
DUE TO NON-DISCLOSURE
POLICY***

*PART OF DATA CAN BE SHOWN IN THE INTERVIEW
*links will take you to the portfolio website/pdf for more information

INTERIOR-EXTERIOR PRODUCTS & SYSTEMS



5

PREWIRED WALL PANELS FOR MODULAR VACATION HOMES



[CLICK HERE FOR
PORTFOLIO](#)

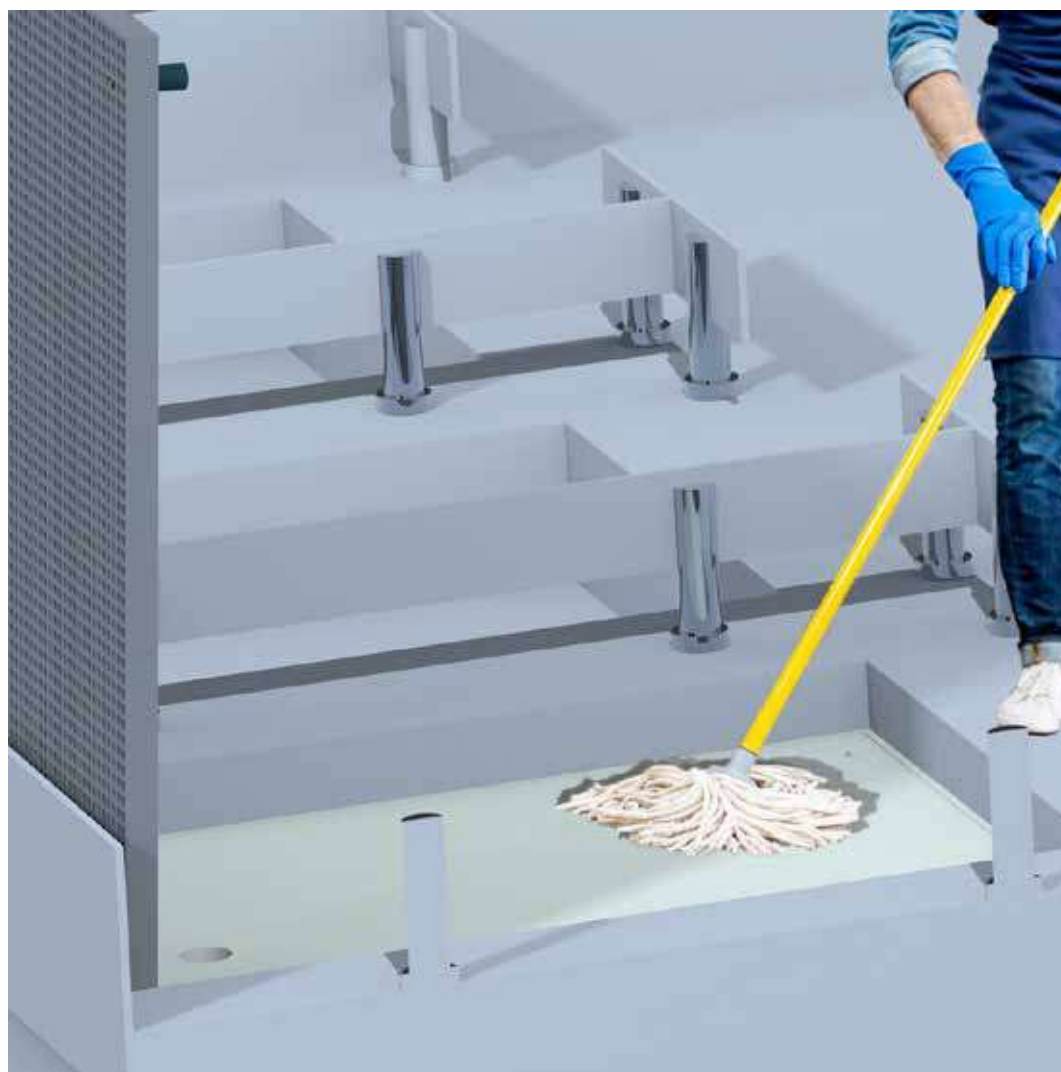


6

DESIGN OF EV CHARGING STATION - ATHERGRID



[CLICK HERE FOR
PORTFOLIO](#)

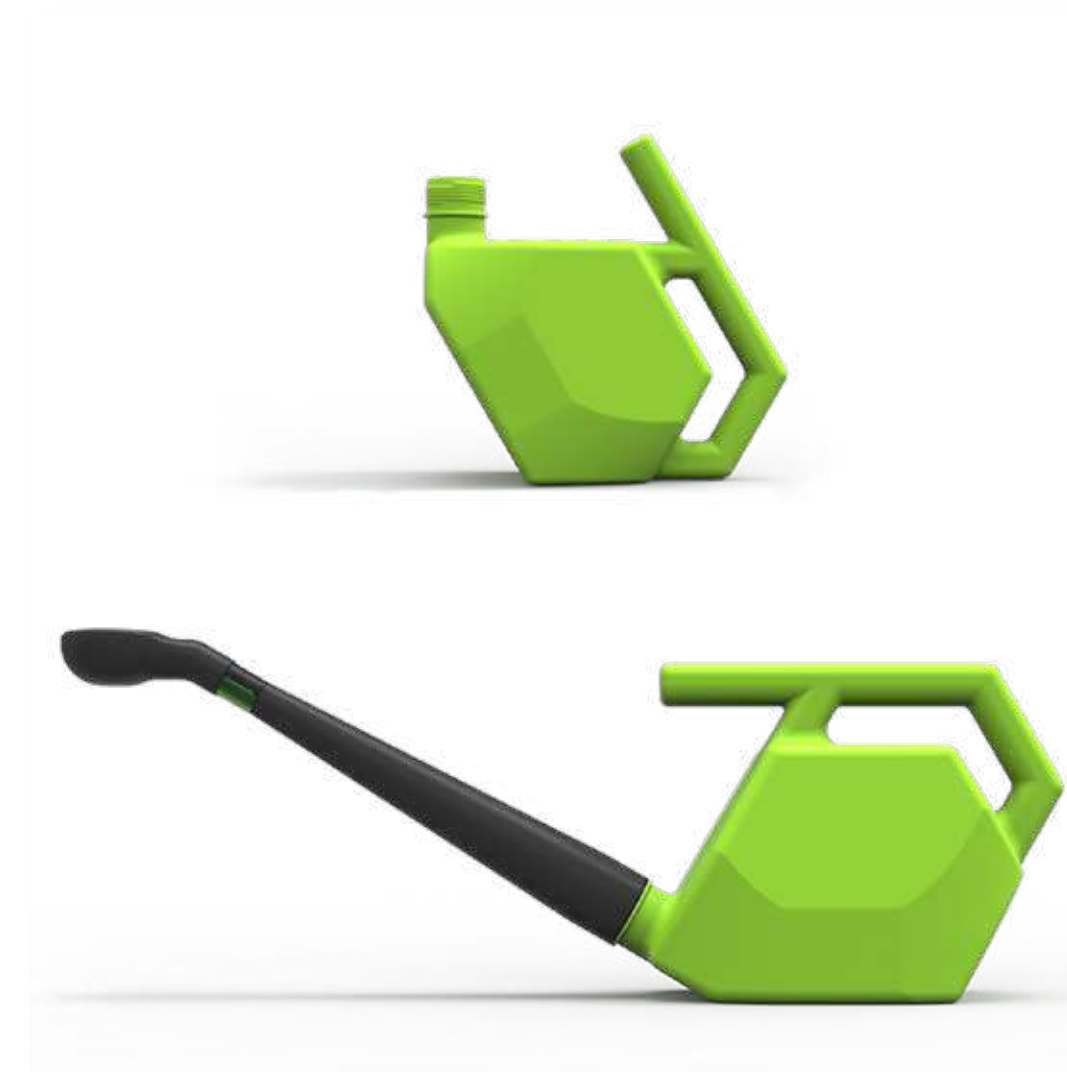


7

SHOWER FLOOR PANEL FOR SWIMMING POOL AREA



[CLICK HERE FOR
PORTFOLIO](#)



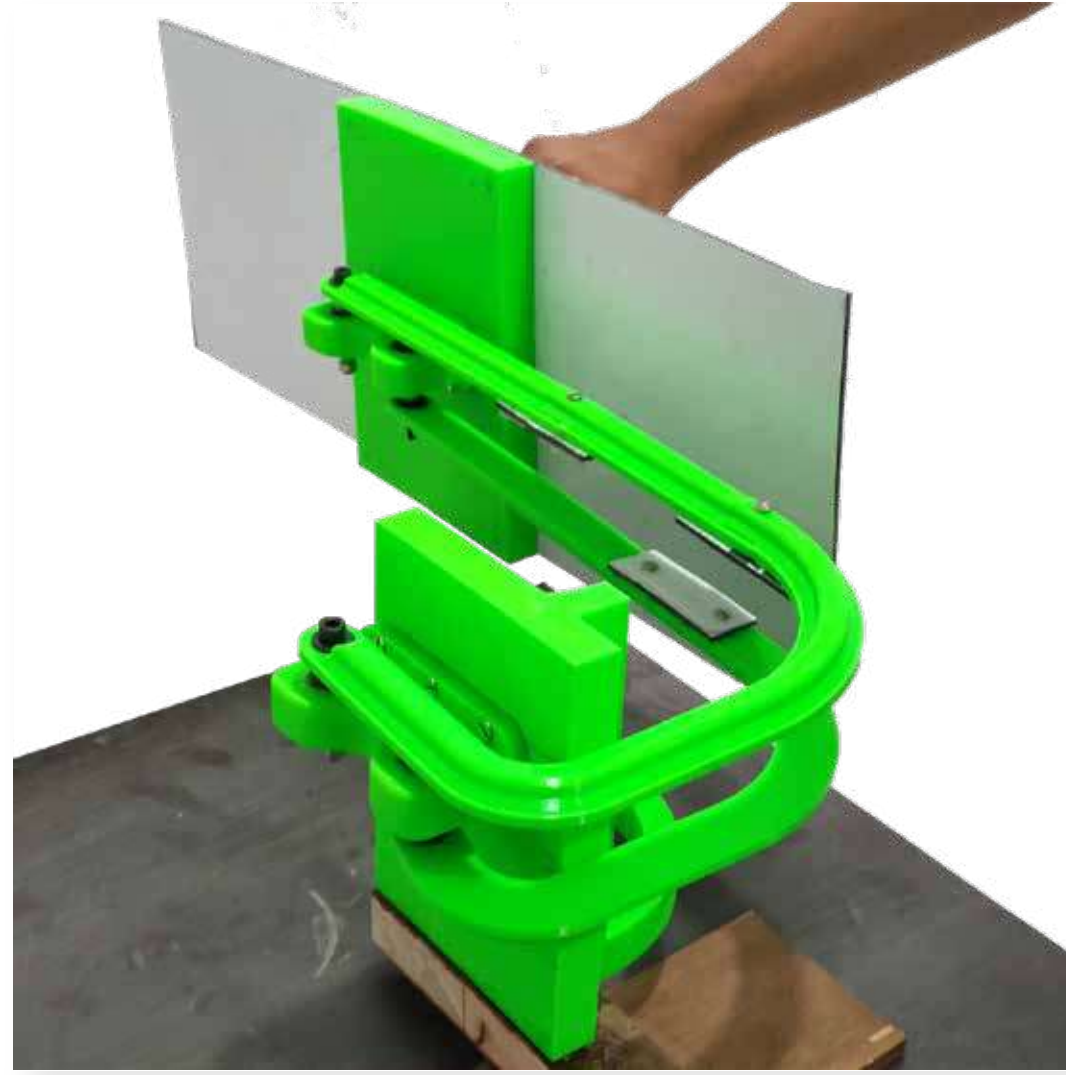
8

WATERING CAN FOR HOUSEHOLDERS



[CLICK HERE FOR
PORTFOLIO](#)

ARCHITECTURE PRODUCTS, FURNITURE, SCULPTURE

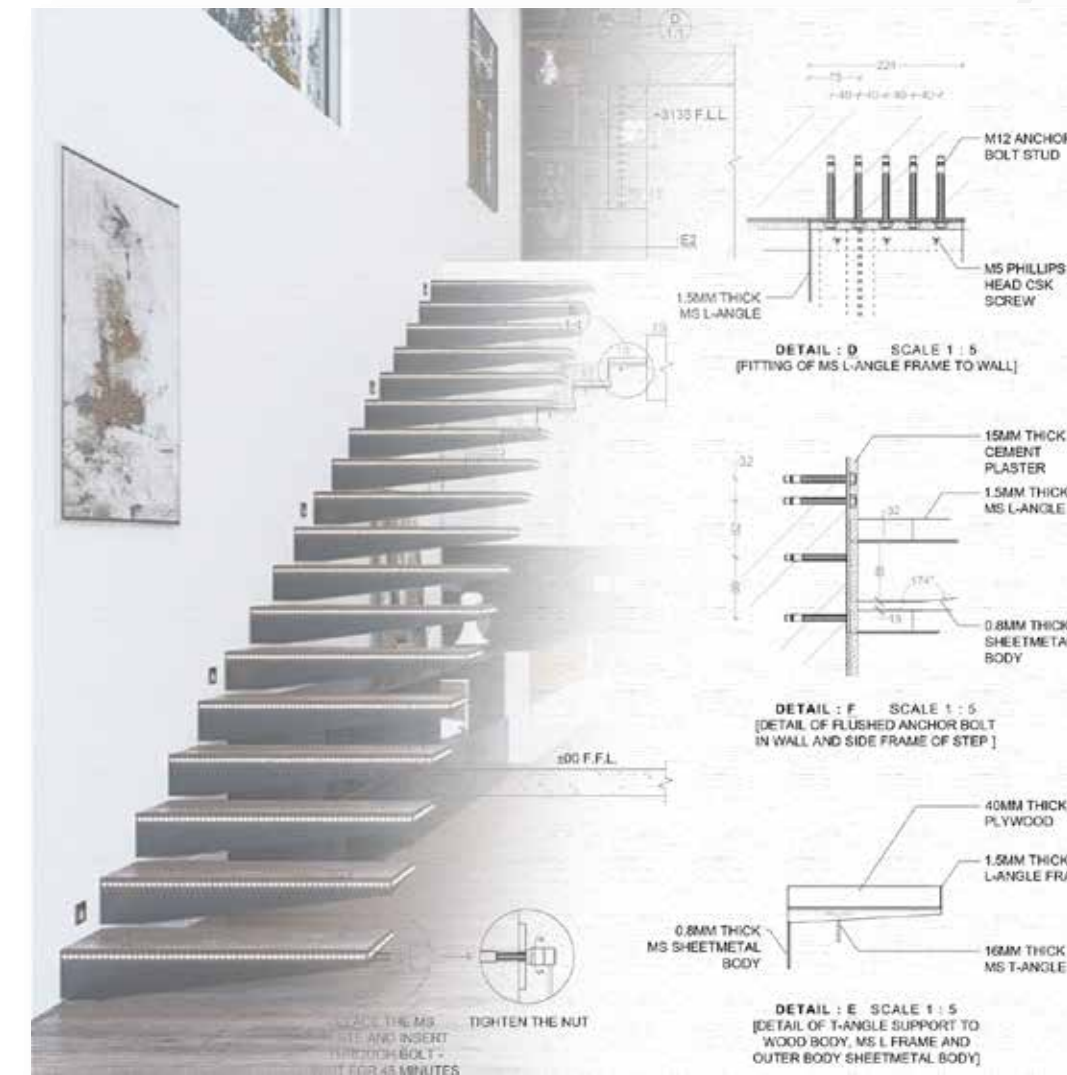


9

DESIGN OF FENESTRATION FOR CURVED WALL



[CLICK HERE FOR
PORTFOLIO](#)



10

TECHNICAL DRAWINGS OF CANTILEVER STAIRCASE



[CLICK HERE FOR
PORTFOLIO](#)



11

Z BRUSH PROJECTS - ZEXTOR AND SPACESHIP



[CLICK HERE FOR
PORTFOLIO](#)

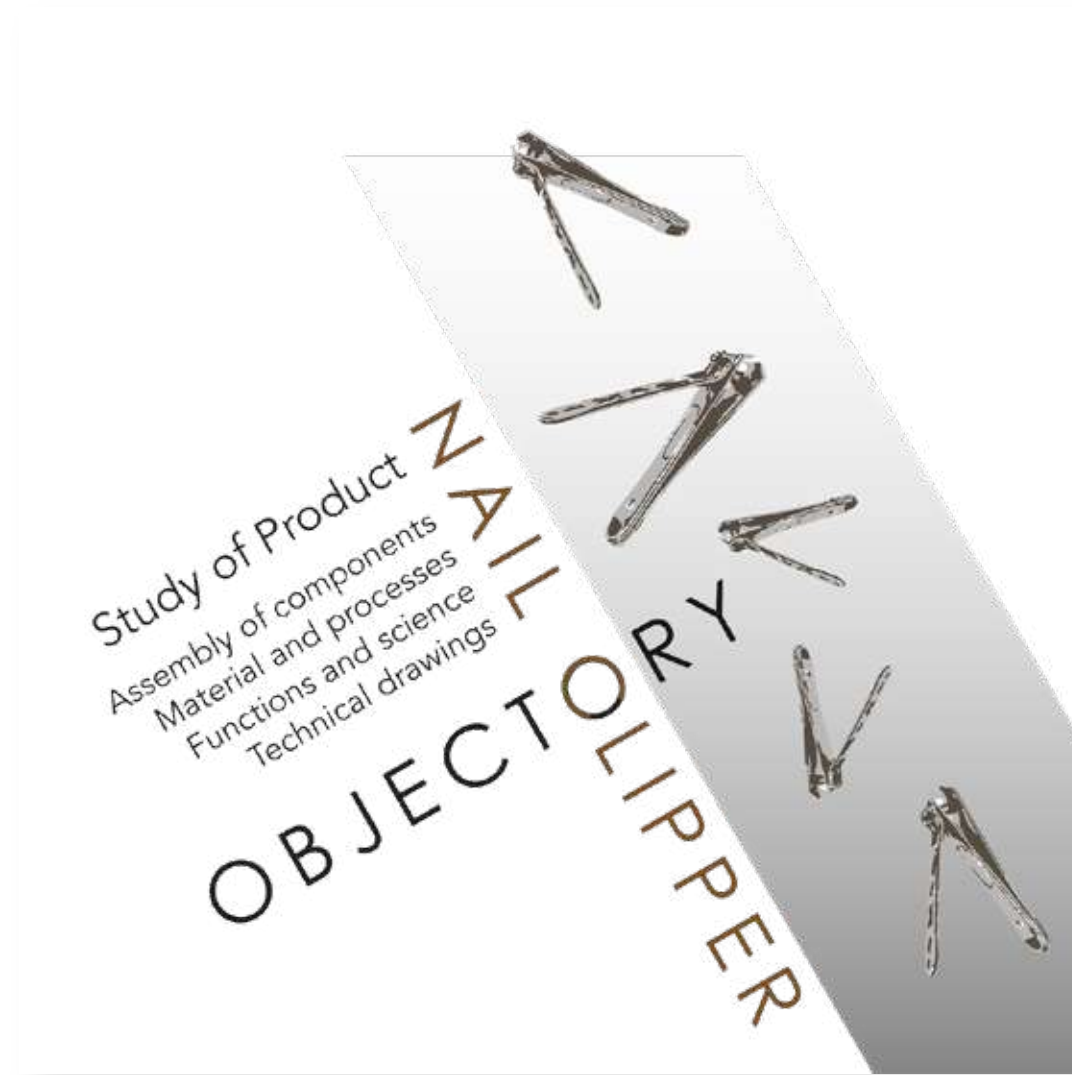


12

MAKING OF WEGNER JH 501 CHAIR (UNDERSTANDING THE MATERIAL & NATURE)



[CLICK HERE FOR
PORTFOLIO](#)



13

OBJECTORY (UNDERSTAND THE PRODUCT) - NAIL CLIPPER



[CLICK HERE FOR
PORTFOLIO](#)



14

FACTORY - DESIGNING A BOOK STAND FOR DOMUS MAGAZINE



[CLICK HERE FOR
PORTFOLIO](#)

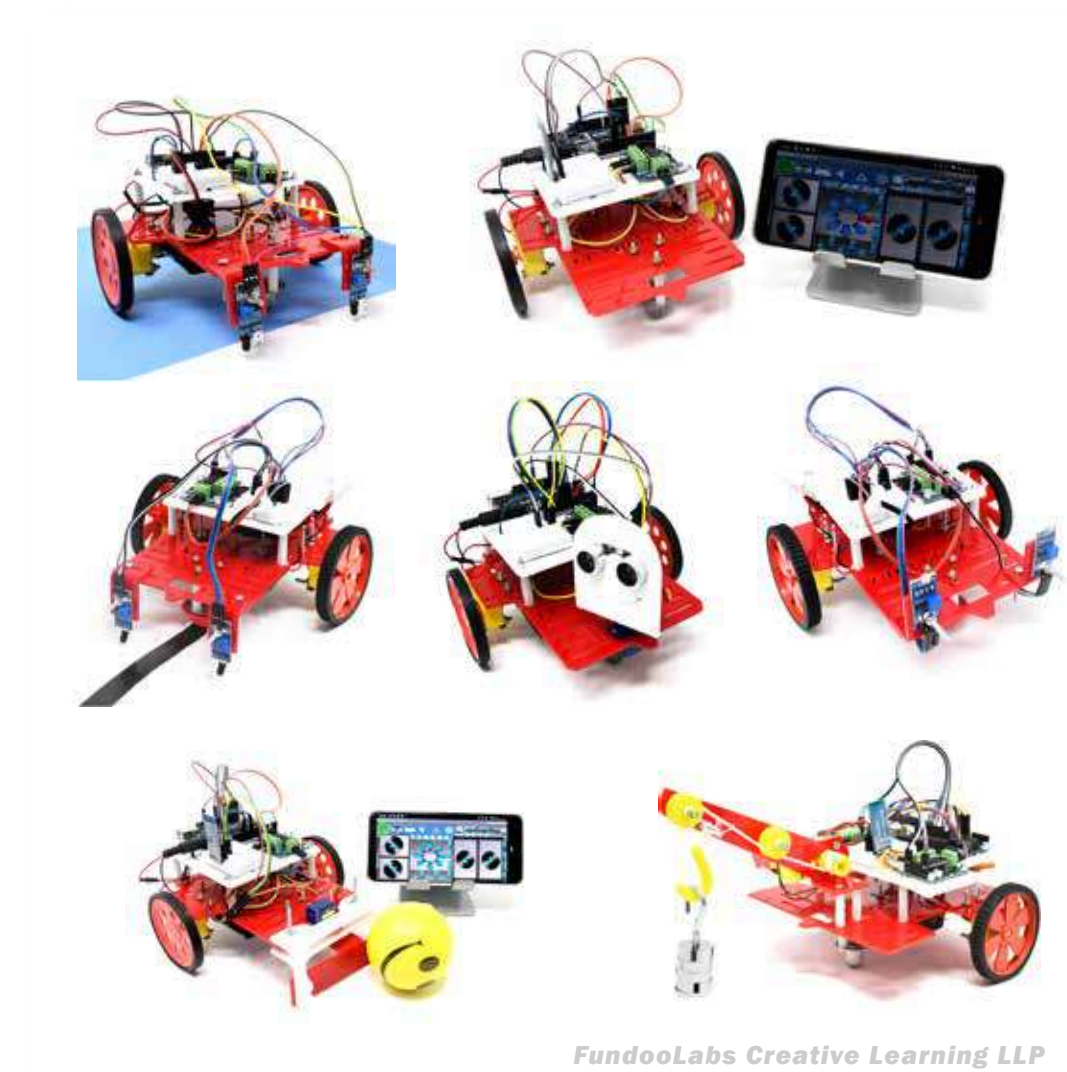


15

SKETCHBOT DIY DRAWING MACHINE



[CLICK HERE FOR
PORTFOLIO](#)



16

DO IT YOURSELF ROBOTICS KIT 45+ MODELS



[CLICK HERE FOR
PORTFOLIO](#)



17

ANALYZING THE BRAND THROUGH DESIGN THEORY - PAPERBOAT



[CLICK HERE FOR
PORTFOLIO](#)



18

USER EXPERIENCE AROUND THELEWALA



[CLICK HERE FOR
PORTFOLIO](#)



19

USER EXPERIENCE AT MANEKCHOWK



[CLICK HERE FOR
PORTFOLIO](#)



20

A REPORT ON SUSTAINABILITY FROM WORD TO REALITY



[CLICK HERE FOR
PORTFOLIO](#)

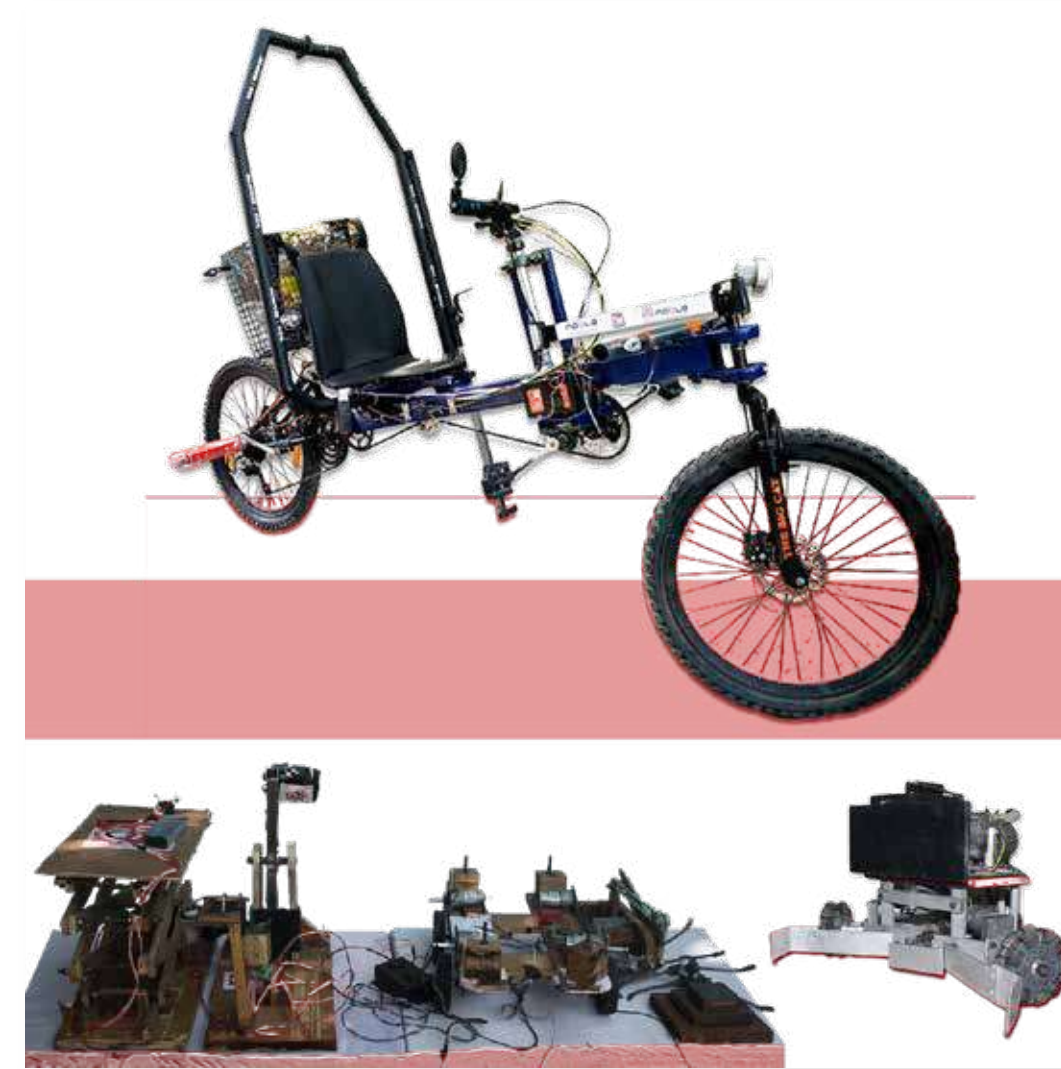


21

ACTIVITY REPORT OF NOBLE INNOVATION CENTRE



[CLICK HERE FOR PORTFOLIO](#)



22

ASME EFEST PROJECT - NX ROBOTS AND THE BIG CAT VEHICLE



[CLICK HERE FOR PORTFOLIO](#)



23

HYBRID AND ECHO ROBOT FOR GTU TEAM AT ROBOCON INDIA



[CLICK HERE FOR PORTFOLIO](#)



24

BOMB DETECTOR AND DISPOSAL ROV



[CLICK HERE FOR PORTFOLIO](#)



25

BRANDING AND PACKAGING - SCULPTRIDER



CLICK HERE FOR PORTFOLIO



26

DO IT YOURSELF Blix COMPATIBLE ROBOTICS KIT



CLICK HERE FOR PORTFOLIO

VISIT WWW.NIKUNJVAZA.COM FOR MORE DETAILS

+91 97373 91067 | nikunjvaza21@gmail.com
www.linkedin.com/in/nikunjvaza